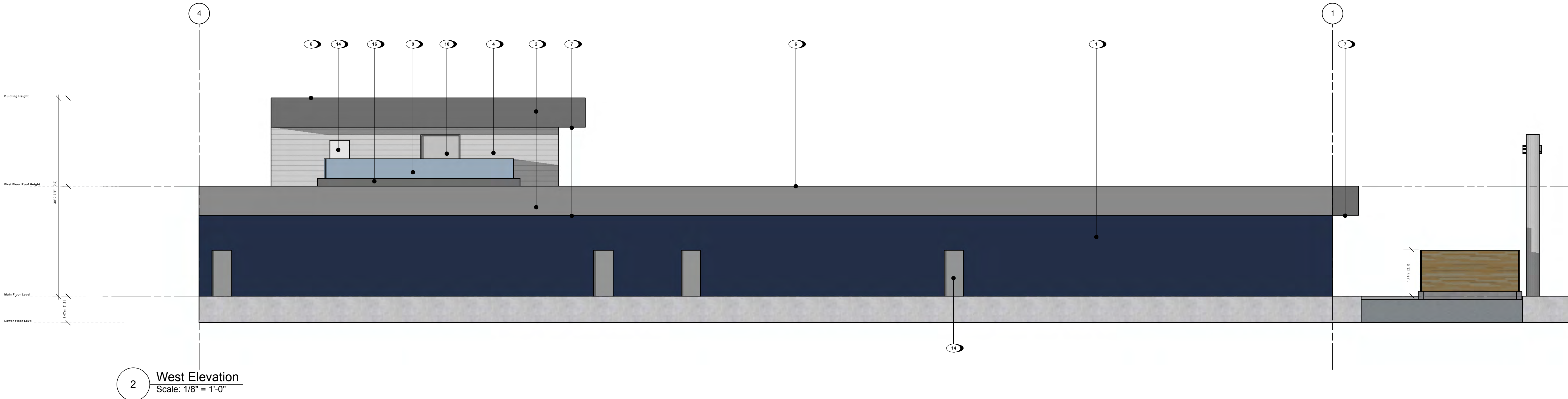
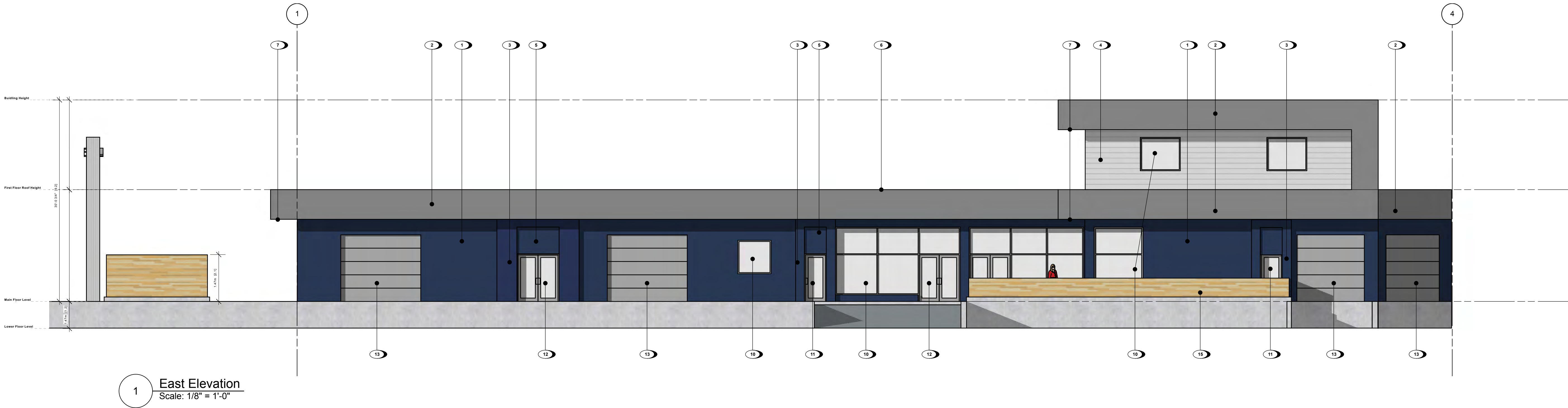


MATERIAL PALETTE

- 1 FIBRE CEMENT PANEL, COLOUR PLUS, SMOOTH FINISH, IN EVENING BLUE, JAMES HARDIE WITH ALUMINIUM FLASHING, COLOUR MATCHED TO EVENING BLUE
- 2 FIBRE CEMENT PANEL, COLOUR PLUS, SMOOTH FINISH, IN SLATE GRAY, JAMES HARDIE WITH ALUMINIUM FLASHING, COLOUR MATCHED TO SLATE GRAY
- 3 PROBOARD 4" SOLID LAP SIDING, WOOD GRAIN FINISH, IN NIGHT GRAY, WESTFORM METALS WITH ALUMINIUM FLASHING, COLOUR MATCHED TO PEARL GRAY

- 4 FIBRE CEMENT LAP SIDING, COLOUR PLUS, SMOOTH FINISH, IN PEARL GRAY, JAMES HARDIE
- 5 V-GROOVE SIDING, IN LIGHT WOOD TONE
- 6 METAL FLASHING, IN IRON GREY
- 7 VENTED SOFFIT, IN LIGHT WOOD TONE
- 8 BALCONY PARAPET
- 9 CLEAR TEMPERED GLASS GUARDRAILS WITH ALUMINIUM TOP RAIL AND FACE MOUNTED POSTS, IN CHARCOAL GREY

- 10 ALUMINUM WINDOW, IN CHARCOAL GREY, WITH CLEAR TEMPERED GLASS PANELS
- 11 ALUMINUM SWING DOOR, IN CHARCOAL GREY, WITH CLEAR TEMPERED GLASS PANELS
- 12 ALUMINUM SWING BI-PART DOOR, IN CHARCOAL GREY, WITH CLEAR TEMPERED GLASS PANELS
- 13 OVERHEAD GARAGE DOOR, IN CHARCOAL GREY
- 14 STEEL SWING DOOR, IN CHARCOAL GREY
- 15 HORIZONTAL LATTICE, ALUTUBE IN ACACIA EXOTIC HONEY (AEH-101)
- 16 PARAPET WALL COMPLETE WITH CAP FLASHING

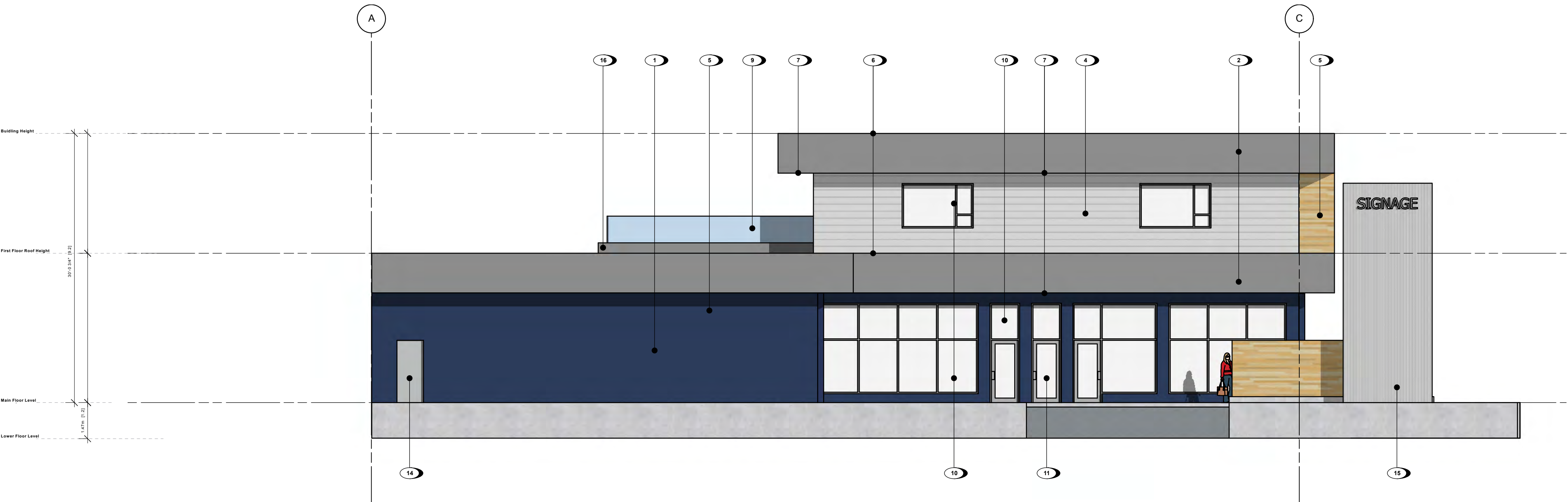


MATERIAL PALETTE

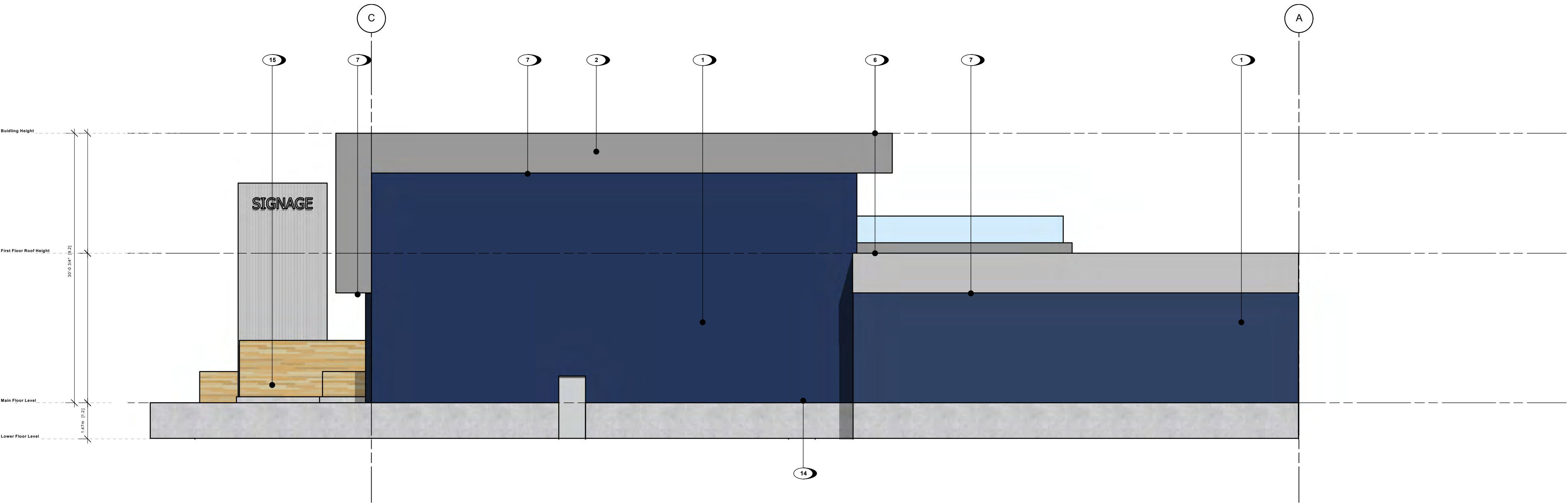
- 1 FIBRE CEMENT PANEL, COLOUR PLUS, SMOOTH FINISH, IN EVENING BLUE, JAMES HARDIE WITH ALUMINIUM FLASHING, COLOUR MATCHED TO EVENING BLUE
- 2 FIBRE CEMENT PANEL, COLOUR PLUS, SMOOTH FINISH, IN SLATE GRAY, JAMES HARDIE WITH ALUMINIUM FLASHING, COLOUR MATCHED TO SLATE GRAY
- 3 PROBOARD 4" SOLID LAP SIDING, WOOD GRAIN FINISH, IN NIGHT GRAY, WESTFORM METALS WITH ALUMINIUM FLASHING, COLOUR MATCHED TO PEARL GRAY

- 4 FIBRE CEMENT LAP SIDING, COLOUR PLUS, SMOOTH FINISH, IN PEARL GRAY, JAMES HARDIE
- 5 V-GROOVE SIDING, IN LIGHT WOOD TONE
- 6 METAL FLASHING, IN IRON GREY
- 7 VENTED SOFFIT, IN LIGHT WOOD TONE
- 8 BALCONY PARAPET
- 9 CLEAR TEMPERED GLASS GUARDRAILS WITH ALUMINIUM TOP RAIL AND FACE MOUNTED POSTS, IN CHARCOAL GREY

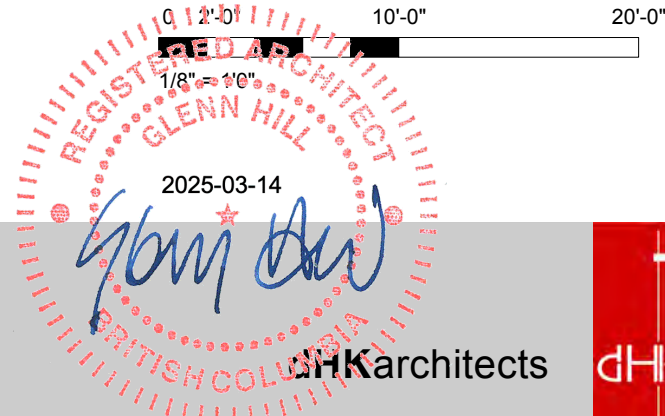
- 10 ALUMINUM WINDOW, IN CHARCOAL GREY, WITH CLEAR TEMPERED GLASS PANELS
- 11 ALUMINUM SWING DOOR, IN CHARCOAL GREY, WITH CLEAR TEMPERED GLASS PANELS
- 12 ALUMINUM SWING BI-PART DOOR, IN CHARCOAL GREY, WITH CLEAR TEMPERED GLASS PANELS
- 13 OVERHEAD GARAGE DOOR, IN CHARCOAL GREY
- 14 STEEL SWING DOOR, IN CHARCOAL GREY
- 15 HORIZONTAL LATTICE, ALUTUBE IN ACACIA EXOTIC HONEY (AEH-101)
- 16 PARAPET WALL COMPLETE WITH CAP FLASHING



1 South Elevation
Scale: 1/8" = 1'-0"



2 North Elevation
Scale: 1/8" = 1'-0"



MATERIAL PALETTE

- 1 FIBRE CEMENT PANEL, COLOUR PLUS, SMOOTH FINISH, IN EVENING BLUE, JAMES HARDIE
WITH ALUMINIUM FLASHING, COLOUR MATCHED TO EVENING BLUE
- 2 FIBRE CEMENT PANEL, COLOUR PLUS, SMOOTH FINISH, IN SLATE GRAY, JAMES HARDIE
WITH ALUMINIUM FLASHING, COLOUR MATCHED TO SLATE GRAY
- 3 PROBOARD 4" SOLID LAP SIDING, WOOD GRAIN FINISH, IN NIGHT GRAY, WESTFORM METALS
WITH ALUMINIUM FLASHING, COLOUR MATCHED TO PEARL GRAY

- 4 FIBRE CEMENT LAP SIDING, COLOUR PLUS, SMOOTH FINISH, IN PEARL GRAY, JAMES HARDIE
- 5 V-GROOVE SIDING, IN LIGHT WOOD TONE
- 6 METAL FLASHING, IN IRON GREY
- 7 VENTED SOFFIT, IN LIGHT WOOD TONE
- 8 BALCONY PARAPET
- 9 CLEAR TEMPERED GLASS GUARDRAILS WITH ALUMINIUM TOP RAIL AND FACE MOUNTED POSTS,
IN CHARCOAL GREY

- 10 ALUMINUM WINDOW, IN CHARCOAL GREY, WITH CLEAR TEMPERED GLASS PANELS
- 11 ALUMINUM SWING DOOR, IN CHARCOAL GREY, WITH CLEAR TEMPERED GLASS PANELS
- 12 ALUMINUM SWING BI-PART DOOR, IN CHARCOAL GREY, WITH CLEAR TEMPERED GLASS PANELS
- 13 OVERHEAD GARAGE DOOR, IN CHARCOAL GREY
- 14 STEEL SWING DOOR, IN CHARCOAL GREY
- 15 HORIZONTAL LATTICE, ALUTUBE IN ACACIA EXOTIC HONEY (AEH-101)
- 16 PARAPET WALL COMPLETE WITH CAP FLASHING

